

Hi-Checker 3.0 Installation Instructions

Note:

Be sure to read these instructions before installation and perform installation in accordance with these instructions. Please transfer this Installation Instructions to users after installation is completed. And, properly keep this manual for future reference.

1 Important Notice


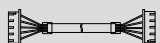
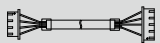
The Hi-Checker 3.0 box is a product that implements the function of monitoring air conditioner data.

Precautions for arrangement of Hi-Checker 3.0.

1. It can only be connected to our air conditioners.
2. It is only used for our company's after-sales service work for air conditioners.
3. There are two data lines in the attachment, which are used for different types of air conditioners. Please refer to the installation instructions to select.
4. It is recommended to use it within 2 meters of the Hi-Checker 3.0.

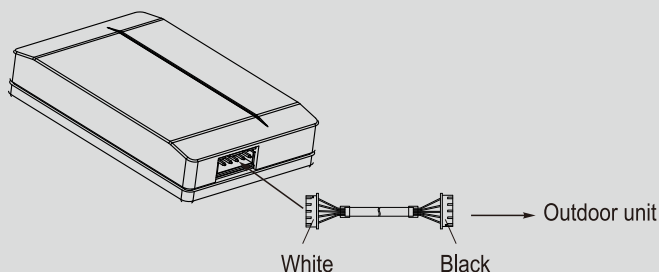
2 Checking accessories

Check and confirm that in addition to the Hi-Checker 3.0 product the following accessories are included in the packaging box.

Installation instructions	Connecting cord	
	Type A (5 PIN-suitable for connecting Multi & Light commercial air conditioners)	Type B (4 PIN-suitable for connecting Residential air conditioners)
		
Qty.: 1	Qty.: 1	Qty.: 1

3 How to install

1. Select the connecting cord corresponding to the air conditioner from the attachments.
2. Connecting the Hi-Checker 3.0 box.
Connect the Hi-Checker 3.0 box with the outdoor unit using the connecting cord as following.



4 How to read operation data

1. Pre-install the "Hi-Service" app on your smart phone or PAD, and double-click the APP icon to open it, as shown in Fig.1. & Fig.2.



Fig. 1

2. Select "Technician" / "Service Provider", input the corresponding username and password and sign in, as shown in Fig. 2.
3. Enter the main interface, as shown in Fig. 3.

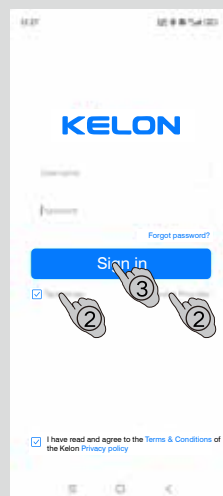


Fig. 2



Fig. 3

4. Click "Support" as shown in Fig. 3 to enter the following interface.

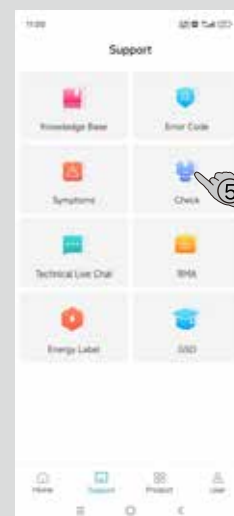


Fig. 4

5. Click “Check” as shown in Fig. 4, the following interface will pop up.

For Android:

Click “Allow” to turn on the Bluetooth on your phone.



Fig. 5.1

For iOS:

Click “Settings” to turn on the Bluetooth on your phone.



Fig. 5.2

6. Select the Bluetooth device that corresponds to the module; Select “Residential Air Conditioner” or “Multi & Light Commercial AC” depending on the type of air conditioner you want to connect.

For iOS:

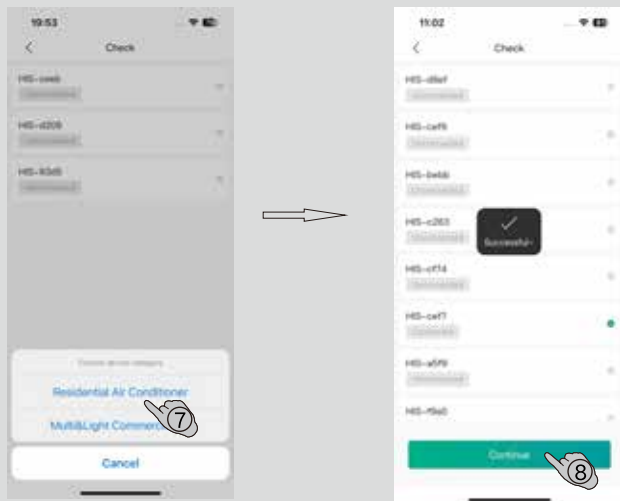


Fig. 6.1

For Android:



Fig. 6.2

NOTE:

The last four digits of the Bluetooth device name corresponding to each module are fixed and can be distinguished based on this when in use.

7. The parameter interface will pop up as shown in Fig. 7, you can choose to read the indoor/outdoor units separately. If the connection is successful, “Connected” will be displayed, if the connection fails, it will display “Unconnected”.

1. For a single indoor unit, select “A Indoor” as its parameter;
2. For the indoor unit of Mutisplit AC, the parameters are selected according to the actual installation sequence A-B-C-D-E (see the shut-off valve identification on the outdoor unit for details);
3. When an “Error code” appears in the FOLD column, please use the Error Code Function in the Hi-Service APP to inquire about maintenance guidelines.

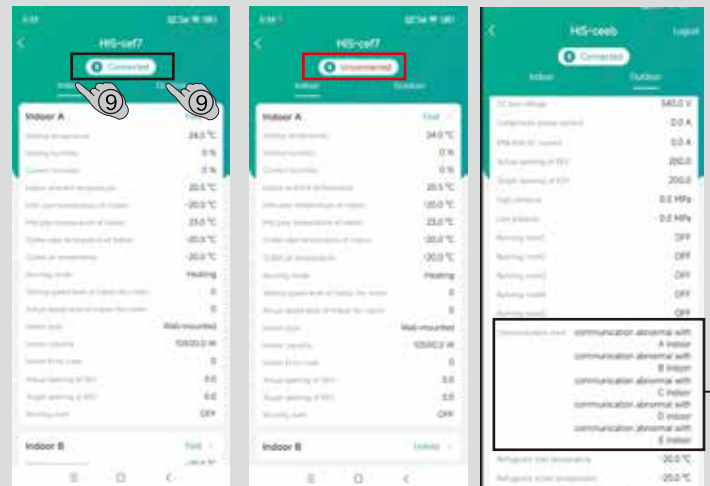


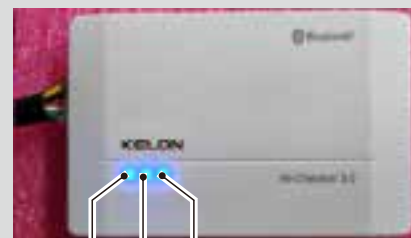
Fig. 7

NOTE:

The default value of the temperature class parameter (unit: °C) is 25°C for Multisplit models, and it is -20°C for other models.

5 Indicator

The Hi-Checker 3.0 box features three LED indicators: LED3 is the power indicator, LED1 is the communication indicator between Hi-Checker 3.0 and mobile APP (Hi-Service), and LED2 is the communication indicator between Hi-Checker 3.0 and air conditioner outdoor unit.



LED3 LED1 LED2

LED1: It remains lit when Hi-Checker 3.0 successfully connects with the mobile APP (Hi-Service). If the connection is unsuccessful, LED1 stays off. After the mobile APP disconnects from Hi-Checker 3.0, LED1 indicator turns off after one minute.

LED2: It remains lit when communication between Hi-Checker 3.0 and the air conditioner outdoor unit is normal, and it stays off if communication fails.

LED3: It remains lit when power supply is normal.

