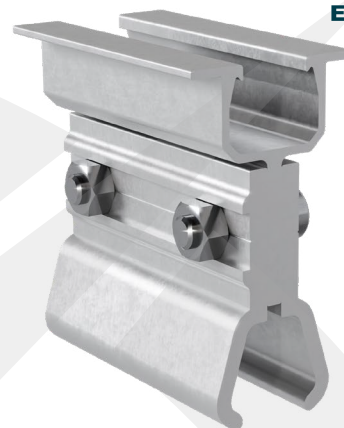
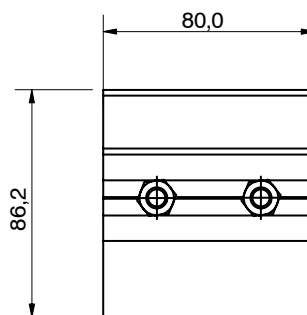
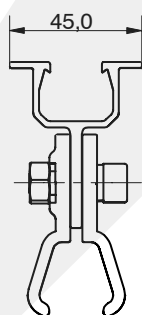


ROOFTOP LM-KS-700

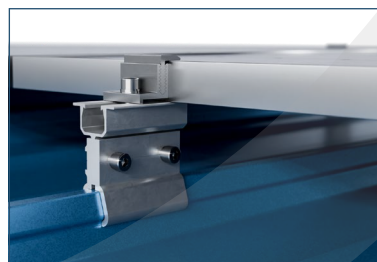


Double Bolted Short Rail for Klip-Lok and Saflok
This secure mounting solution is designed to fit Klip-Lok and Saflok profiles and ensures stability.

Application	Saflok 700 (Safintra) Klip-lok 700 (GRS) Similar roof types
Key Features	<p>Attach to popular concealed fix metal roofs without sheet penetration</p> <p>Durable materials</p> <p>Metallurgical compatibility with most metal roofs</p> <p>Compatible with grounding washer, mid and end clamps</p> <p>Certified high holding strength</p> <p>Good ventilation, 100 mm clearance between panel frame and roof sheet</p> <p>Convenient installation</p> <p>Resistant to over-tightening as bolts and nuts are stainless steel (no aluminium thread)</p> <p>Single tool fastening - groove prevents nuts from turning along while tensioning the bolts</p>
Material	Aluminium 6005-T5, Stainless steel SUS304
Product type	Concealed fix
Specifications	Anodized > 13µm
Dimensions	H 87 mm x L 80 mm x W 45 mm
Total Weight	220 g (including fasteners)
Orientation	Landscape



Versatile Roof Compatibility
This mounting system is designed for seamless attachment to popular concealed fix metal roofs like Saflok and Klip-lok, without penetrating the roof sheets.



Durable, User-Friendly
Made from Aluminium 6005-T5 and stainless steel, this system ensures strength, easy installation, and long-lasting performance with anti-over-tightening bolts and a corrosion-resistant anodized finish.