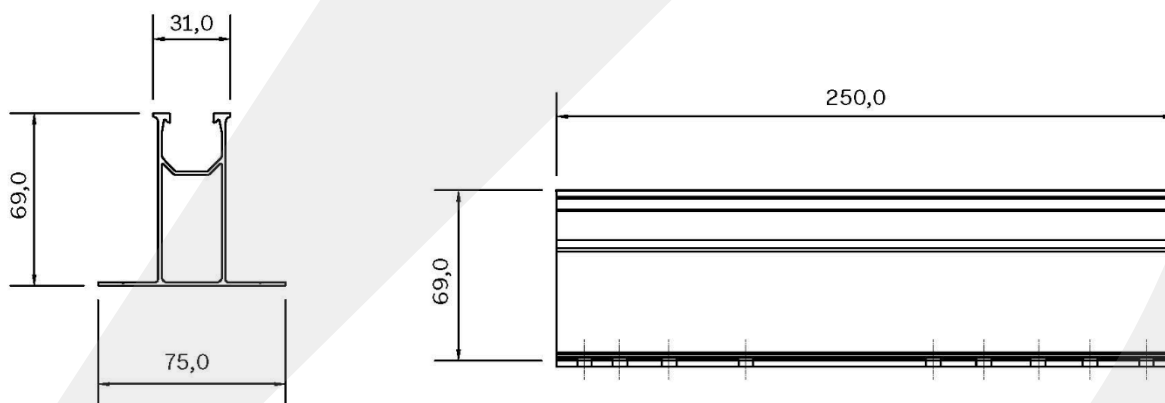


Short Rail with EPDM for Portrait Mounting on Corrugated and IBR Roofs

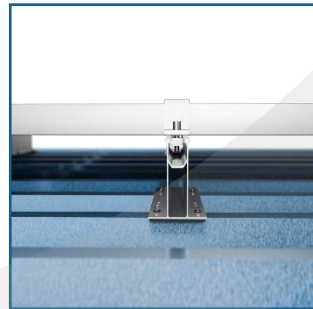
This rail is specifically designed for mounting solar panels in portrait orientation on standard corrugated and IBR metal roofs. It includes an EPDM strip to ensure weather-resistant seal between the rail and the roof surface.

Application	Popular trapezoidal Corrugated sheet
Key Features	<p>Fast and easy installation</p> <p>Pre-punched holes designed for popular South African trapezoidal and corrugated sheeting.</p> <p>Excellent ventilation clearance for optimal airflow</p> <p>Made from durable, noncorrosive materials</p> <p>Double gasket system includes an EPDM layer and elastomer washer for waterproofing</p> <p>Compatible with grounding washers, mid-clamps, and end-clamps.</p>
Material	Aluminium 6005-T5 / 6063 -T6, EPDM
Specifications	Tumbled / Mill Finish
Dimensions	H 71 mm x L250 mm x W75 mm
Total Weight	270 g
Orientation	Portrait



Leak- Preventative

The LMK-TBRP features a leak-preventing EPDM layer where the screws are placed offering enhanced protection against water ingress.



Easy Installation

The LMK-TBRP features a versatile design compatible with most corrugated sheet profiles and popular trapezoidal sheeting.