

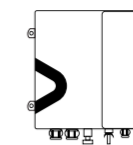
# DATASHEET 3

AC/DC CONTROLLER SERIES

**VC-3AC/DCS4.8-135-200-1500**

REFER TO PAGE 30, LINE NUMBER 7

AC/DC SOLAR BOREHOLE PUMP  
STAINLESS STEEL IMPELLER



**H** AC/DC HYBRID COMPLEMENTARY CONTROLLER  
**A** AC/DC AUTOMATIC SWITCHING CONTROLLER  
**M** MANUAL CONTROLLER

### COMPLIMENTARY ACCESSORIES



Packaging Weight: 10 - 35kg

Packaging Dimensions: 73.5 x 29 x 13cm



Solar Panels Sold Separately

## PRODUCT FEATURES



MPPT FUNCTION  
INTEGRATED CONTROLLER



COMPACT & EASY TO USE



OVERLOAD AND ADJUSTABLE  
SPEED CONTROL OF  
THE MOTOR



INGRESS PROTECTION IP65



SUITABLE FOR WIDE  
DC VOLTAGE OPERATION



MAINTENANCE-FREE  
BRUSHLESS MOTOR



DRY RUN SAFEGUARD



TEMPERATURE & REVERSE  
POLARITY PROTECTION

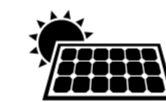
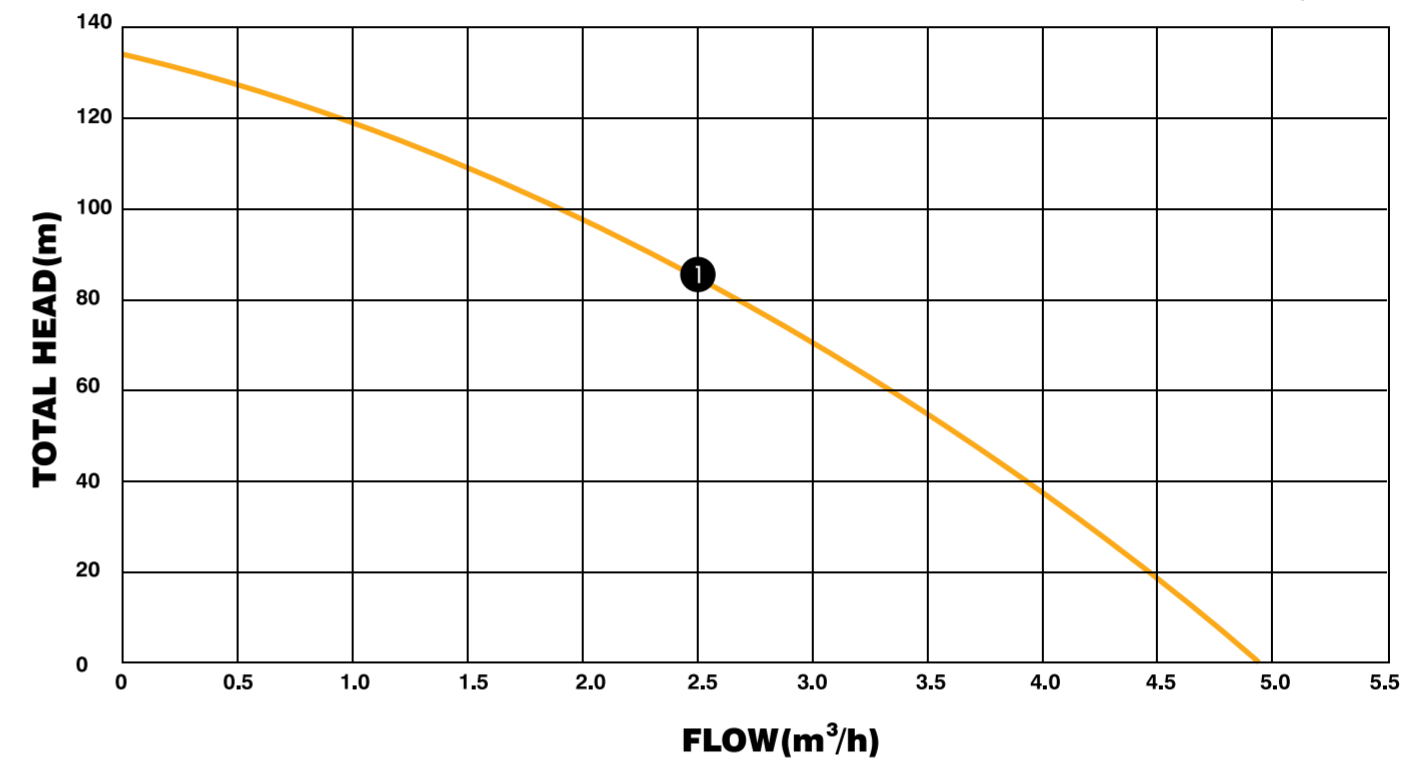


25% INCREASED EFFICIENCY

## DATASHEET 3

## HYDRAULIC PERFORMANCE CURVES

SPEED~4000r/min



Solar Panels Suggestion  
( $\geq 1.3 \times$  PUMP POWER)

### TECHNICAL DATA

| Model                     | Voltage | Outlet (in) | Max Head (m) | Power | Current | Max Flow | Power (w) | Min Quantity (pcs) | Series Connection |
|---------------------------|---------|-------------|--------------|-------|---------|----------|-----------|--------------------|-------------------|
| 1 VC-3DCS4.8-135-200-1500 | 200V    | 1.25"       | 135m         | 1500W | 8A      | 4.8m/h   | 555W      | 4                  |                   |
| Running Voltages          | DC      | 110-430V    | AC           | AC/DC |         |          |           |                    |                   |

## DATASHEET 3

## Refer to installation guide

Earth Spike  
Sold Separately



Cable Cable  
Dry run protection.  
Sold Separately



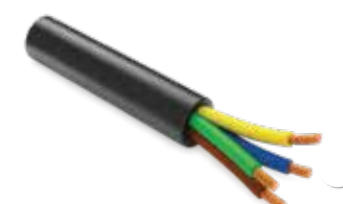
Joint Kit for  
joining of cables  
Sold Separately



Combiner Box  
Sold Separately



Submersible Cable  
Sold Separately



Polysteel  
3 strand rope  
Sold Separately

