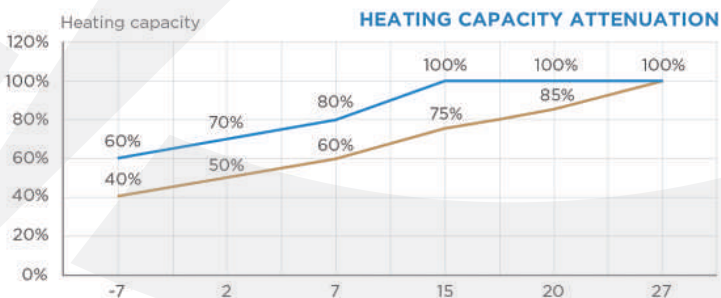


ECO+ Series Pool Heat Pump

- The ECO+ series is committed to create a future **Net-Zero** heat pump product that conforms to the sustainable development strategy in terms of manufacturing/materials/equipment use
- ECO+ is the latest inverter heat pump range from ITS, featuring all the latest technology features.



No Recession

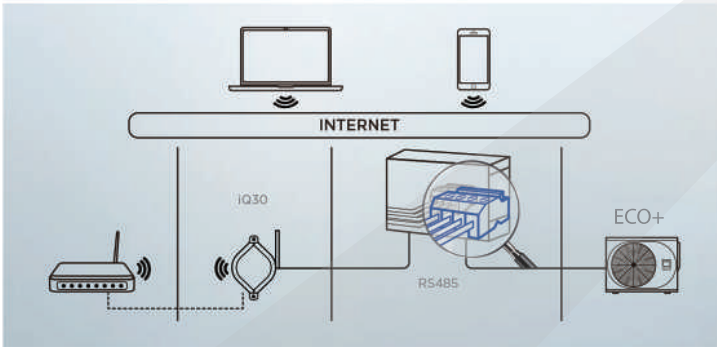
ONLY ECO+: ECO+ heat pump have **0 heating capacity recession** from ambient temp **27°C to 15°C**, while traditional heat pump have at least **20% -30%** capacity recession

Ambient temp — ECO+ Heating capacity(%) — Traditional Heating capacity(%)



Heating&Cooling

ECO+ heat pump contains **heating and cooling and automatic** modes, covering a wide range of operating environment temperature and target water temperature



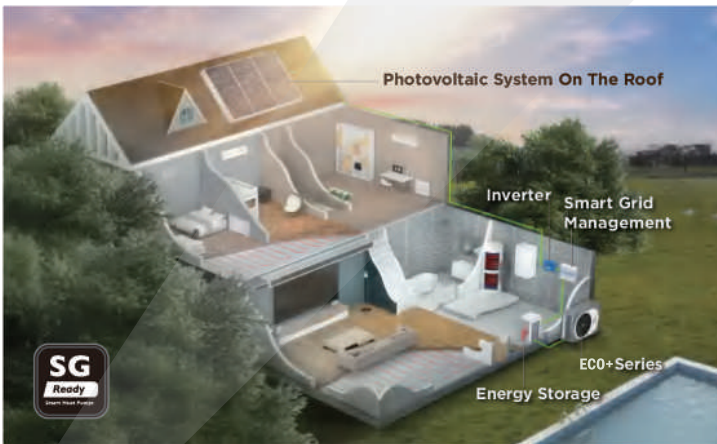
Pool system centralized control

ECO+ heat pump is compatible with all centralized control pool systems using **Modbus protocol and RS485 connector**



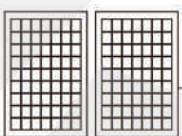
IOT&APP

App controls and **IOT** platforms are designed to ensure user ease of operation and reduce equipment maintenance costs



SG-Ready

SG-ready ensures that ECO+ heat pump uses as much clean energy as possible from the smart grid and stores the energy in the swimming pool. When the smart grid is fully supplied with clean energy, ECO+ heat pumps consume close to zero carbon



Photovoltaic System On The Roof



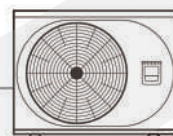
Inverter



Smart Grid Management



Energy Storage



ECO+

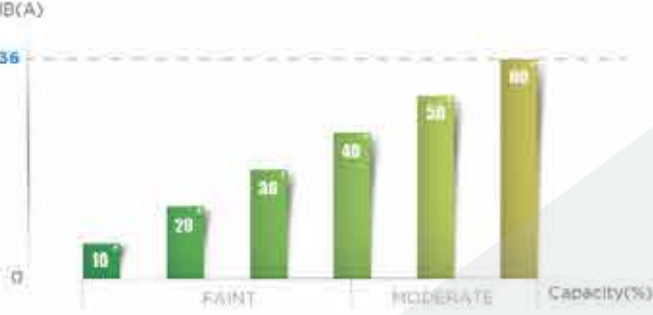


Swimming Pool



Smart Memory

Power-off memory function restores the ECO+ series to preset parameters after restart



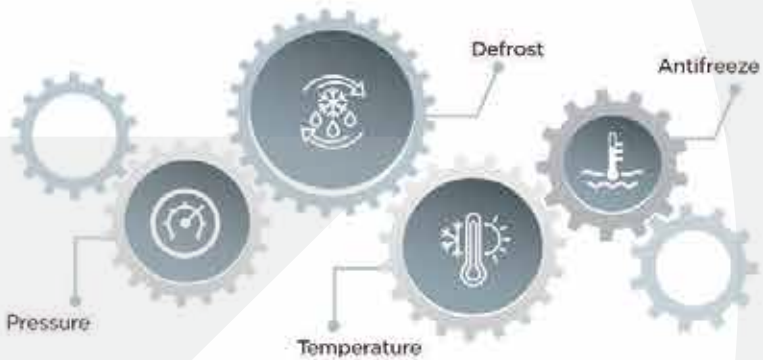
Silent Mode

ECO+ series heat pumps in silent mode can reach 60% of unit capacity at 36dB(A) level

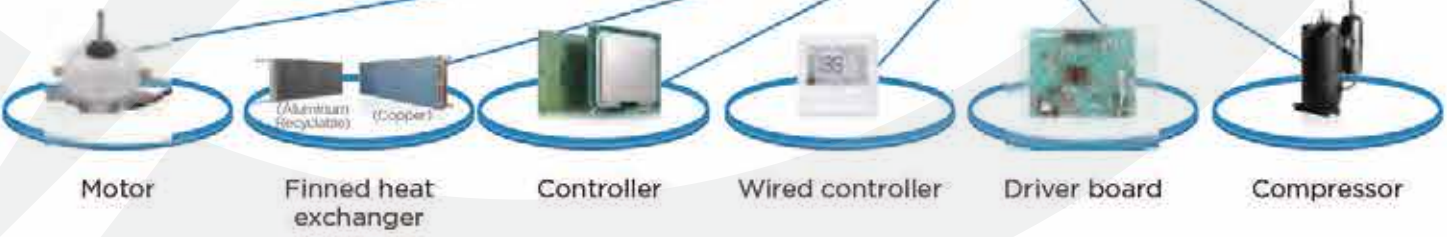


System Protection





ECO+ series heat pumps have more than 10 protection functions including defrost/pressure/temperature/antifreeze to ensure that the unit runs in a long-term healthy state

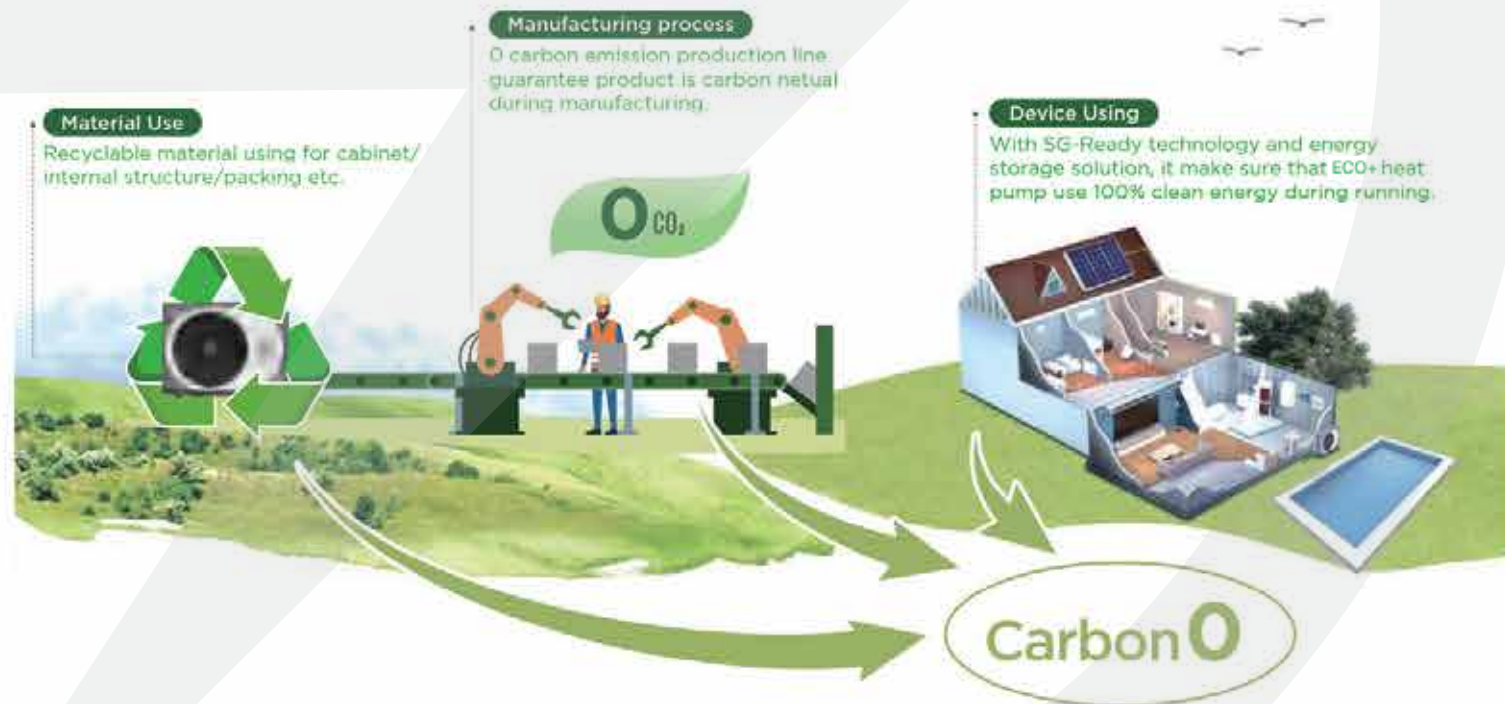


Our manufacturing partner boasts a very high level of vertical intergration enabling us to manufacture the ECO+ Premium range at budget series pricing.



Parameter table

| | |  |  |  |  |
|---|-------------------|---|---|---|---|
| Model Number | | ITS-10.3HPI | ITS-12.8HPI | ITS-14.5HPI | ITS-18.7HPI |
| Boost Mode(Max) capacity (Air 27°C/Water 26°C/Humid. 80%) | kW | 2.9-10.3 | 2.9-12.8 | 2.8-14.5 | 3.8-18.7 |
| Consumed capacity | kW | 0.24-1.56 | 0.24-2.13 | 0.23-2.28 | 0.31-3.67 |
| Heating Capacity (Air 27°C/Water 26°C/Humid. 80%) | KW | 2.9-7.16 | 2.9-9.15 | 2.8-12.5 | 3.8-16.0 |
| Consumed capacity | KW | 0.24-0.95 | 0.24-1.35 | 0.23-1.79 | 0.31-2.67 |
| Rated Input Current | A | 11 | 13 | 15 | 21 |
| Water Volume | m ³ /h | 3.1 | 3.9 | 5.4 | 6.9 |
| Power Supply | V/PH/HZ | 220-240Vac/1/50Hz | | | |
| COP | | | Up to 12.5 | | |
| Casing | | Corrosion Resistant ABS | | | |
| Refrigerant | | R32 -0.55kg | R32 -0.55kg | R32 -0.75kg | R32 -0.78kg |
| Noise | dBa | 41 | 43 | 49 | 50 |
| Water Connection | | 50mm PVC pipe | | | |
| | L | 988 | 988 | 988 | 988 |
| Unit Dimensions (mm) | W | 365 | 365 | 365 | 365 |
| | H | 712 | 712 | 712 | 712 |
| Nett Weight | kg | 52 | 52 | 56 | 59 |



itsTM
heat pumps & solar